

Our
Chamber
Kilns



Our chamber kilns are carefully handcrafted using high quality materials and are truly worthy of the “Made in Germany” label. This quality level ensures reliable performance for many years, making our chamber kilns the ideal partner for everyday use. Their appealing design, including the intuitive color touch screen controller, gives our chamber kilns an aesthetic presence in your workshop. Excellent temperature uniformity delivers outstanding results that turn every firing into a true experience. We are well aware of how important every firing is for you, so we developed the free MyNabertherm app. This allows you to monitor your firings on mobile devices and track firing progress at all times.

The following equipment applies to all chamber kilns in this chapter:



Exclusive use of insulation materials without categorization according to EC Regulation No 1272/2008 (CLP). This explicitly means that alumino silicate wool, also known as “refractory ceramic fiber” (RCF), which is classified and possibly carcinogenic, is not used.



Freeware NTEdit for convenient program input via Excel™ for MS Windows™ on the PC



Optimized insulation construction for a perfect balance between the best possible energy consumption and short cycle times



NTLog Basic for Nabertherm controller: recording of firing data with USB-flash drive



Controller can be switched to “Solar Mode” to use electricity from PV systems with and without battery



Freeware NTGraph for evaluation and documentation of firings using Excel™ for MS Windows™ on the PC



Defined application within the constraints of the operating instructions

“I trust my Nabertherm kiln.
It fires quickly, reliably and
economically.”

Katharina Pasternak,
leelahloves.de



Detailed Overview

Ceramics Creates Passion.
Trust in Nabertherm.



Multi-layer refractory insulation with light-weight refractory bricks



Door seal "brick on brick"



Removable controller with touch operation (see page 58)



Mobile monitoring with the MyNabertherm app



Motorized exhaust air flap for chamber kilns from 440 liters



Exhaust air opening for chamber kilns up to 300 liters



Dual shell housing provides for low temperatures



Low noise electronic relays



Manual air inlet sliding damper for chamber kilns from 440 liters



Semi-motorized air inlet flap for chamber kilns up to 300 liters



Protected door contact switch



Additional Equipment

Multiple-zone control to optimize temperature uniformity in the work space



Motorized air inlet flap that can be opened and closed in relation to the program



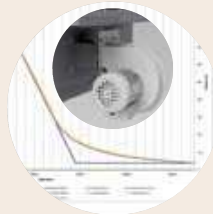
Cooling fan incl. motorized air inlet flap for kilns up to 300 liters to reduce process times



Switchable contact for switching on a customer site exhaust air extraction fan (for chamber kilns N 100 - N 660/H, NE 140 - NE 280, NW 150 - NW 660/H)



Controlled cooling, including cooling fan from 440 liters to reduce process times



Stainless steel exhaust hood



Door locking kit as set consisting of two door locks with 2 keys (not for chamber kilns NE 40 - NE 100)



Door hinges on the left side (not for chamber kilns NE ..)



Base in special height (not for chamber kilns NE 40 - NE 100)



Base mounted on castors (not for chamber kilns N 100 - N 300/H)



Second bogie for NW kilns from 440 liters



Kiln furniture



Observation hole in the kiln door, 15 mm diameter (not for chamber kilns NE ..)



Chamber Kilns up to 1300 °C

heated from five sides

Welcome to the world of professional firing. With their high-quality workmanship, attractive design, long service life and excellent temperature uniformity, our kilns in the N range set new standards. Our chamber kilns from 100 to 660 liters, heated from five sides, have a maximum firing temperature of 1300 °C and are the creative companion for arts and crafts professionals.

These chamber kilns have proven their worth for many years, firing stoneware, porcelain and glass, even when tightly stacked and at high working temperatures. No matter whether you are working in your ceramic workshop, a studio, a hospital, a school or in the private sphere – our chamber kilns will meet your needs. They are a reliable partner even if you pack your kiln tightly and fire it frequently, guaranteeing excellent temperature uniformity.

Standard equipment

- Heating elements on support tubes ensure free heat radiation

- Heating from five sides and a special arrangement of the heating elements ensure excellent temperature uniformity
- SiC shelves to protect the floor heating and provide a level setting surface
- Frame
- Door cover made from structured stainless steel
- Semi-motorized air inlet flap that closes automatically after the drying phase in the heating program for chamber kilns up to 300 liters
- Motor-driven exhaust air flap in the middle of the kiln roof for optimum ventilation of the kiln chamber for chamber kilns from 440 liters

Controller

- Controller with touch operation AC590 incl. cone firing assistant, controls description see page 59

Our chamber kilns are more than just kilns – they represent inspiration and passion for your unique projects!



Chamber kiln N 300

Additional
equipment
see page 23



For Eternity.



„Craftsmanship
for happiness.“

Tanja Möwis,
bremen-keramik.de



Heating from five sides on support tubes and a special arrangement of the heating elements ensure excellent temperature uniformity



SiC shelves to protect the floor heating and provide a level setting surface



Durable refractory insulation ensures clean firing results

Model	Tmax °C	Inner dimensions in mm			Volume in l	Outer dimensions ² in mm			Connected load ³ kW	Electrical connection*	Weight in kg
		w	d	h		W	D	H ¹			
N 100	1300	400	530	460	100	710	1130	1440	9	3-phase	280
N 150	1300	450	530	590	150	760	1130	1570	11	3-phase	320
N 200	1300	470	530	780	200	790	1130	1760	15	3-phase	380
N 300	1300	550	700	780	300	870	1300	1760	20	3-phase	450
N 440	1300	600	750	1000	440	1000	1410	1830	30	3-phase	820
N 660	1300	600	1100	1000	660	1000	1750	1830	40	3-phase	950

¹Base included

²External dimensions vary when furnace is equipped with additional equipment. Dimensions on request

³The connected load refers to the standard furnace and may increase for a furnace with additional equipment. For furnaces with connection options for multi-range voltages, the connected load applies to the highest permissible connected voltage.

*Please see page 61 for more information about supply voltage

Chamber Kilns up to 1340 °C

heated from five sides

Our chamber kilns in the N .. H range have a maximum firing temperature of 1340 °C. The kilns combine the product benefits of the N range but the insulation and heating elements are designed especially for firing at higher temperatures.

They are especially robust and are the ideal partner for professional ceramists. This kiln range is particularly durable and is guaranteed to serve you reliably and safely for many years. The excellent temperature uniformity is achieved with five side heating elements on support tubes.

Standard equipment

- Like chamber kilns, heated from five sides, see page 24

Controller

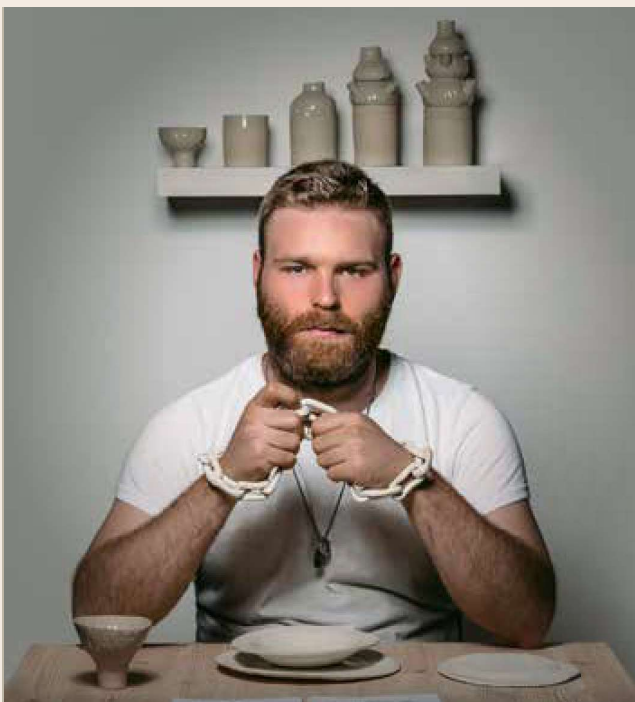
- Controller with touch operation AC590 incl. cone firing assistant, controls description see page 59

The attractive design makes a professional chamber kiln an eye-catcher in your workshop!

Additional
equipment
see page 23

“A Nabertherm is your best friend in the ceramics studio.”

Will Martin,
williamjohnmartin.com



Chamber kiln N 300/H



Heating from five sides on support tubes and a special arrangement of the heating elements ensure excellent temperature uniformity



SiC shelves to protect the floor heating and provide a level setting surface



Increased connected load for frequent high working temperatures

Model	Tmax °C	Inner dimensions in mm			Volume in l	Outer dimensions ² in mm			Connected load ³ kW	Electrical connection*	Weight in kg
		w	d	h		W	D	H ¹			
N 100/H	1340	400	530	460	100	760	1150	1440	11	3-phase	330
N 150/H	1340	430	530	620	150	790	1150	1600	15	3-phase	380
N 200/H	1340	500	530	720	200	860	1150	1700	20	3-phase	450
N 300/H	1340	550	700	780	300	910	1320	1760	27	3-phase	540
N 440/H	1340	600	750	1000	440	1000	1410	1830	40	3-phase	900
N 660/H	1340	600	1100	1000	660	1000	1750	1830	52	3-phase	1250

¹Base included

²External dimensions vary when furnace is equipped with additional equipment. Dimensions on request

³The connected load refers to the standard furnace and may increase for a furnace with additional equipment. For furnaces with connection options for multi-range voltages, the connected load applies to the highest permissible connected voltage.

*Please see page 61 for more information about supply voltage

Drawer and Shuttle Kilns up to 1300 °C heated from five sides

Immerse yourself in the fascinating world of our chamber kilns in the NW range – a combination of tried and tested quality and innovative technology. With these kilns, you not only fire to 1300 °C, you create art.

Do you prefer to load your kiln conveniently and ergonomically? In this case, the NW product line is the ideal choice for your ceramics. With an easy-to-use drawer mechanism in the models up to 300 liters, the floor can be easily pulled out of the kiln. This considerably simplifies loading from three sides outside the kiln and helps protect your back and prevent back pain. The models from 440 liters have a bogie that can be loaded effortlessly outside the kiln.

Developed for ceramic workshops, studios, hospitals and schools, this product line is recommended as a trusted companion for everyday use. Most of our chamber kilns are

available immediately and larger models can usually be delivered within a short time.

Standard equipment

- Like chamber kilns, heated from five sides, see page 24
- Ergonomic, effortless loading from three sides

Controller

- Controller with touch operation AC590 incl. cone firing assistant, controls description see page 59

Discover how effortless and inspiring firing can be – welcome to your personal creative oasis!



Chamber kiln NW 300

Additional
equipment
see page 23



The Magic of
Opening the Kiln.



Ergonomic, effortless loading from three sides



Heating from five sides on support tubes and a special arrangement of the heating elements ensure excellent temperature uniformity



SiC shelves to protect the floor heating and provide a level setting surface

Model	Tmax °C	Inner dimensions in mm			Volume in l	Outer dimensions ¹ in mm			Connected load ² kW	Electrical connection*	Weight in kg
		w	d	h		W	D	H			
NW 150	1300	430	530	620	150	810	1150	1600	11	3-phase	420
NW 200	1300	500	530	720	200	880	1150	1700	15	3-phase	490
NW 300	1300	550	700	780	300	930	1320	1760	20	3-phase	590
NW 440	1300	600	750	1000	450	1070	1410	1830	30	3-phase	850
NW 660	1300	600	1100	1000	660	1070	1750	1830	40	3-phase	1180

¹External dimensions vary when furnace is equipped with additional equipment. Dimensions on request

*Please see page 61 for more information about supply voltage

²The connected load refers to the standard furnace and may increase for a furnace with additional equipment. For furnaces with connection options for multi-range voltages, the connected load applies to the highest permissible connected voltage.

Drawer and Shuttle Kilns up to 1340 °C heated from five sides

You like to load your kiln effortlessly and ergonomically and fire frequently to just above 1300 °C? In this case, we recommend our chamber kilns with a drawer or removable bogie up to 1340 °C.

These kilns have all the product benefits of the NW product line as well as more robust insulation and stronger heating elements that are designed for firing at higher temperatures. The high electrical rating also allows the kilns to heat up much faster. This combination of technical properties gives the kiln range the power to fire your works of art to 1340 °C.

Standard equipment

- Like chamber kilns, heated from five sides, see page 24
- Ergonomic, effortless loading from three sides

Controller

- Controller with touch operation AC590 incl. cone firing assistant, controls description see page 59

You can look forward to a reliable and safe firing experience!



Additional
equipment
see page 23



Effortlessly and
Ergonomically.

Shuttle kiln NW 440/H



Heating from five sides on support tubes and a special arrangement of the heating elements ensure excellent temperature uniformity



Drawer mechanism for NW chamber kilns up to 300 liters



Increased connected load for frequent high working temperatures

Model	Tmax °C	Inner dimensions in mm			Volume in l	Outer dimensions ¹ in mm			Connected load ² kW	Electrical connection*	Weight in kg
		w	d	h		W	D	H			
NW 150/H	1340	430	530	620	150	810	1150	1600	15	3-phase	520
NW 200/H	1340	500	530	720	200	880	1150	1700	20	3-phase	590
NW 300/H	1340	550	700	780	300	930	1320	1760	27	3-phase	670
NW 440/H	1340	600	750	1000	450	1070	1410	1830	40	3-phase	940
NW 660/H	1340	600	1100	1000	660	1070	1750	1830	52	3-phase	1310

¹External dimensions vary when furnace is equipped with additional equipment. Dimensions on request

*Please see page 61 for more information about supply voltage

²The connected load refers to the standard furnace and may increase for a furnace with additional equipment. For furnaces with connection options for multi-range voltages, the connected load applies to the highest permissible connected voltage.

Chamber Kilns

heated from two sides

Are you looking for a kiln that you can load from the front via a large door and that also has an outstanding price-performance ratio? In this case, the NE product line from 40 to 100 liters is the perfect choice for your ceramics. The heating elements are protected in grooved bricks to ensure that they are not damaged when you load the kiln. With its appealing design, this kiln product line is the perfect choice to meet your needs.

These versatile chamber kilns are ideal for ceramics but can also be used for glass or porcelain painting or simple fusing work. Most of our models are in stock and can be delivered immediately. The infinitely adjustable fresh-air opening in the door and the exhaust air opening in the roof not only optimize ventilation of the kiln chamber, they also speed up cooling so that you can touch and be fascinated by your unique works of art sooner.

Standard equipment

- Heating elements protected in grooves
- Heating from both sides
- Designed as a tabletop model, base available as an accessory
- Infinitely adjustable fresh-air inlet
- Scope of delivery includes an option for connecting an exhaust air pipe (80 mm diameter)
- Low noise electronic relays

Controller

- Controller with touch operation AC590 incl. cone firing assistant, controls description see page 59

Art that's fun!



Chamber kilns NE 70 with base as additional equipment



Chamber kiln NE 40 as a tabletop model

Additional
equipment
see page 23



Two-sided heating with elements protected in grooves



Insulation made from refractory and large format bricks ensures clean firing results



Model with base as additional equipment

Model	Tmax °C	Inner dimensions in mm			Volume in l	Outer dimensions ³ in mm			Connected load ⁴ kW	Electrical connection*	Weight in kg
		w	d	h		W	D	H ²			
NE 40	1300	350	330	350	40	640	800	600	2.9	1-phase	95
NE 40/R	1300	350	330	350	40	640	800	600	5.5	3-phase ¹	95
NE 70/L	1200	400	380	450	70	690	850	700	2.9	1-phase	120
NE 70	1300	400	380	450	70	690	850	700	3.6	1-phase	120
NE 70/R	1300	400	380	450	70	690	850	700	5.5	3-phase ¹	120
NE 100/L	1100	460	440	500	100	750	910	750	5.5	3-phase	150
NE 100	1300	460	440	500	100	750	910	750	7.0	3-phase	150

¹Heating only between two phases

²Height with base + 700 mm

³External dimensions vary when furnace is equipped with additional equipment. Dimensions on request

⁴The connected load refers to the standard furnace and may increase for a furnace with additional equipment. For furnaces with connection options for multi-range voltages, the connected load applies to the highest permissible connected voltage.

*Please see page 61 for more information about supply voltage

Chamber Kilns

heated from three sides

Additional
equipment
see page 23

Are you looking for a very special kiln for use in a public institution or for your hobby? In this case, our kilns in the NE product line with heating elements in grooved bricks on three sides and an unbeatable price performance ratio are the perfect choice for you. This kiln range is based on the durable design of our professional chamber kilns in combination with the product benefits of our NE product line.

If you want to use the kiln intensively and regularly pack it tightly, we recommend our chamber kilns with heating from five sides. A controlled air inlet flap is included with the standard delivery. After the drying phase in the heating program, the flap closes semi-automatically at a chosen temperature without you having to do anything.

“You can completely rely on the excellent firing results of a Nabertherm kiln.”

Rosa Wiland Holmes,
rosawilandholmes.com



Standard equipment

- Heating elements protected in grooves
- Heating from three sides (both sides and floor)
- Three ceramic shelves and lower shelf to protect the bottom insulation and for safe stacking of the furniture
- Base frame included in the scope of delivery

Controller

- Controller with touch operation AC590 incl. cone firing assistant, controls description see page 59

Experience intuitive technology that makes your work much easier!



Chamber kiln NE 280



Three-sided heating with elements protected in grooves



Three ceramic shelves and lower shelf to protect the bottom insulation and for safe stacking of the furniture



Base frame included in the scope of delivery

Model	Tmax °C	Inner dimensions in mm			Volume in L	Outer dimensions ⁴ in mm			Connected load ⁵ kW	Electrical connection*	Weight in kg
		w	d	h		W	D	H ¹			
NE 140/L	1100	450 ²	580	570 ³	140	720	1130	1440	6	3-phase	280
NE 140	1300	450 ²	580	570 ³	140	720	1130	1440	9	3-phase	280
NE 210/L	1100	500 ²	580	700 ³	210	770	1130	1570	9	3-phase	320
NE 210	1300	500 ²	580	700 ³	210	770	1130	1570	11	3-phase	320
NE 280/L	1100	520 ²	580	890 ³	280	790	1130	1760	9	3-phase	400
NE 280	1300	520 ²	580	890 ³	280	790	1130	1760	15	3-phase	400

¹Base included

²Collar width reduced by 50 mm

³Collar width reduced by 110 mm

⁴External dimensions vary when furnace is equipped with additional equipment. Dimensions on request

⁵The connected load refers to the standard furnace and may increase for a furnace with additional equipment. For furnaces with connection options for multi-range voltages, the connected load applies to the highest permissible connected voltage.

*Please see page 61 for more information about supply voltage

Standard Equipment of Chamber Kilns

Function	NE 40 - NE 100	NE 140 - NE 280	N 100 - NW 300/H	N 440 - NW 660/H
Catalog page	32 - 33	34 - 35	24 - 31	24 - 31
Multi-layer insulation with light-weight refractory bricks	●	●	●	●
Exclusive use of insulation materials without categorization according to EC Regulation No 1272/2008 (CLP). This explicitly means that alumino silicate wool, also known as "refractory ceramic fiber" (RCF), which is classified and possibly carcinogenic, is not used.	●	●	●	●
Rugged, self-supporting, vaulted arch construction	-	●	●	●
Door with durable seal, precisely ground by hand	●	●	●	●
Dual shell housing, galvanized steel side panels	●	●	●	●
Protected door contact switch	●	●	●	●
Low noise electronic relays	●	●	●	●
Removable controller for comfortable operation	●	●	●	●
Semi-motorized air inlet flap	-	●	●	-
Air inlet flap closes motorized after residual drying	-	○	○	○
Infinitely adjustable fresh-air flap	●	*	*	●
Scope of delivery includes an option for connecting an exhaust air pipe (80 mm diameter)	●	●	●	*
Motorized exhaust air flap	-	○	○	●
Five-sided heating on support tubes	-	-	●	●
Three-sided heating, protected in grooves	-	●	-	-
Two-sided heating, protected in grooves	●	-	-	-
Scope of delivery includes 3 ceramic supports and shelf	-	●	-	-
Scope of delivery includes SiC floor plate	-	-	●	●
Scope of delivery includes base	○	●	●	●
Door cover made from structured stainless steel	-	-	●	●

● Standard

○ Option

- Not available for this kiln product line

* Already motor-driven in the standard version

